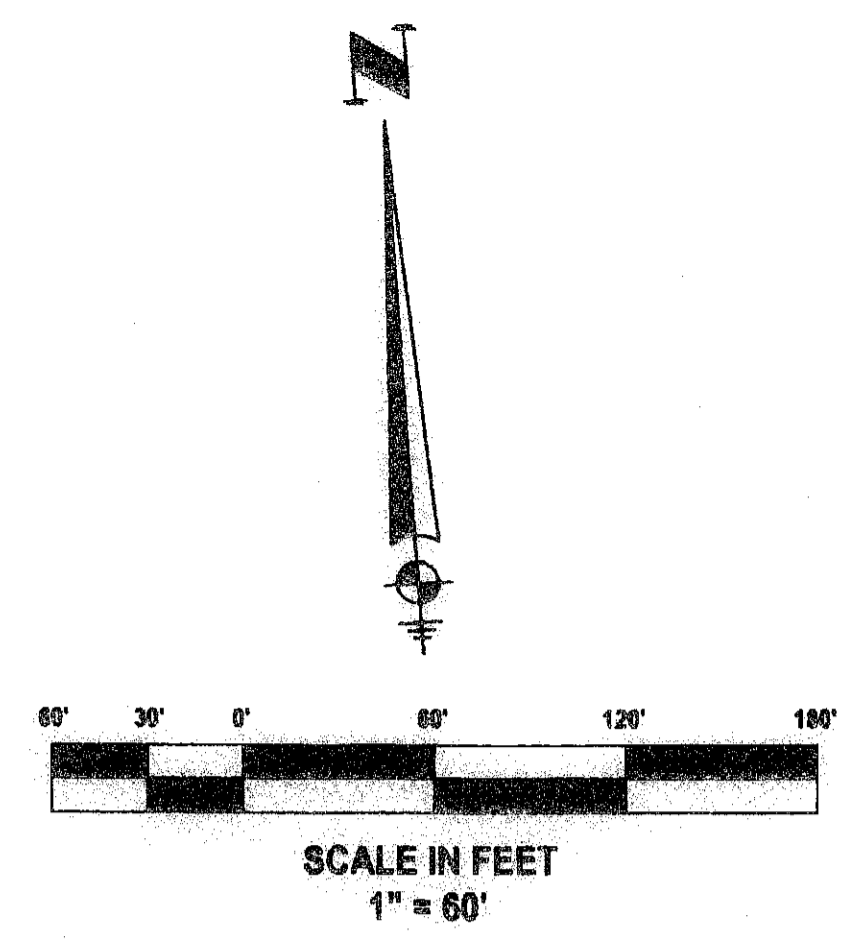


GANDER MOUNTAIN AT SANDTREE

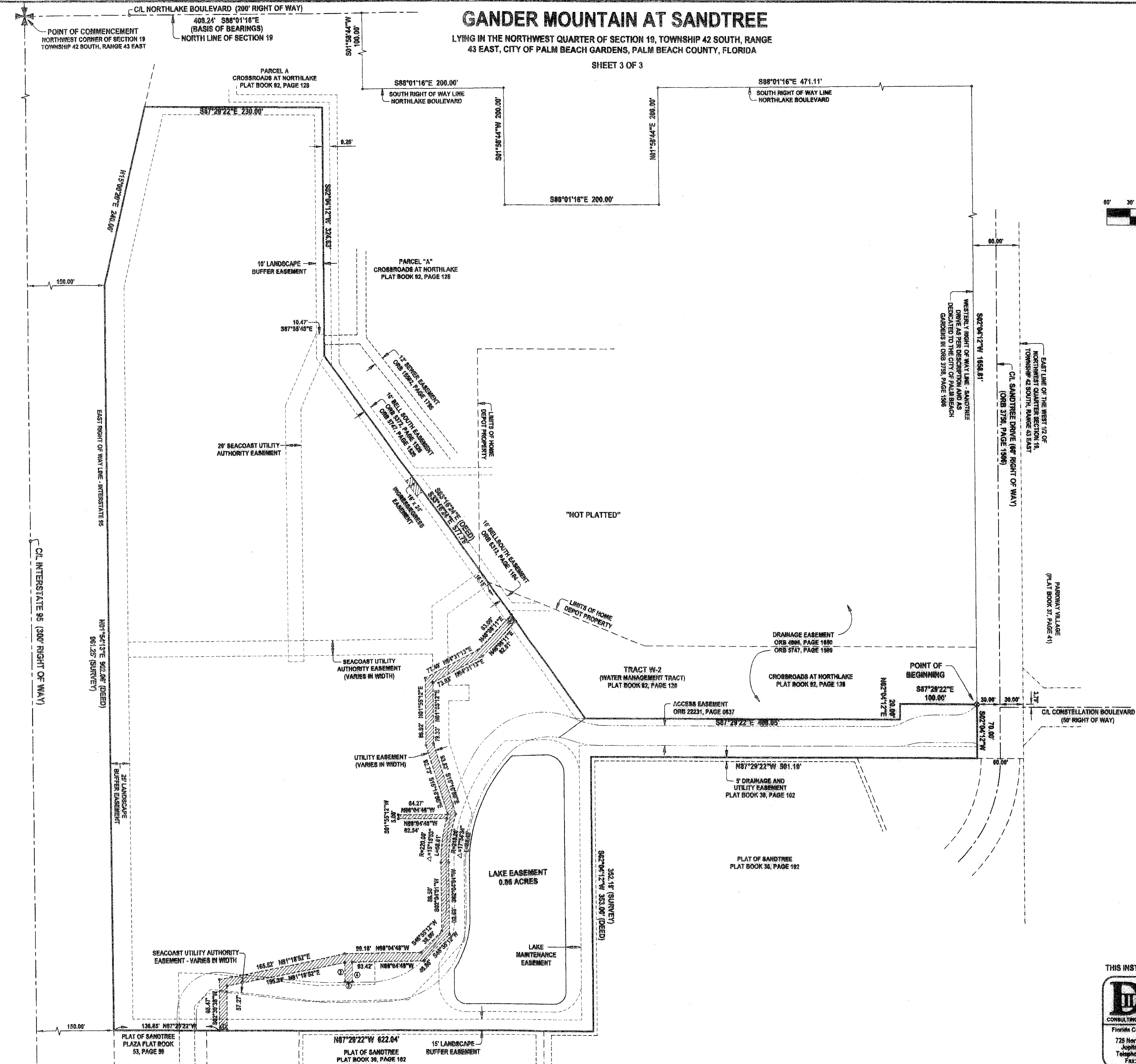
LYING IN THE NORTHWEST QUARTER OF SECTION 19, TOWNSHIP 42 SOUTH, RANGE 43 EAST, CITY OF PALM BEACH GARDENS, PALM BEACH COUNTY, FLORIDA

SHEET 3 OF 3



LINE & CURVE DATA

#	LENGTH	BEARING
1	10.00'	S87°29'22"E
2	25.02'	S01°55'12"W
3	10.00'	N88°04'48"W
4	25.21'	S01°55'12"W
5	10.17'	S33°16'24"E



THIS INSTRUMENT WAS PREPARED BY DONALD D. DANIELS IN THE OFFICES OF DONALD D. DANIELS, INC.

<p>DONALD D. DANIELS, INC. CONSULTING SURVEYORS & MAPPERS</p>	<p>GANDER MOUNTAIN AT SANDTREE</p>		<p>SCALE: 1"=60'</p>
	<p>Florida Certificate LB No. 4185 725 North A1A, Suite C-111 Jupiter, Florida 33477 Telephone: (561) 747-9984 Fax: (561) 747-9985</p>	<p>REFERENCE: 18/42/43 OFFICE: DAO CHECKED:</p>	<p>REVISIONS: 12/21/07 - Address Comments</p>